

Register your product and get support at  
[www.philips.com/welcome](http://www.philips.com/welcome)

HP8618/00

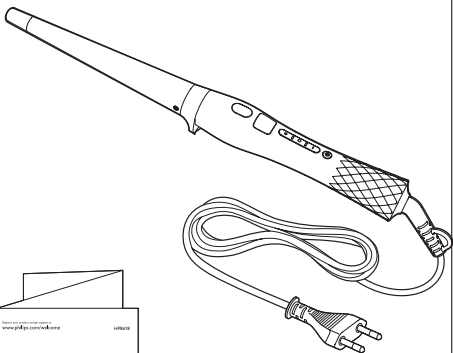


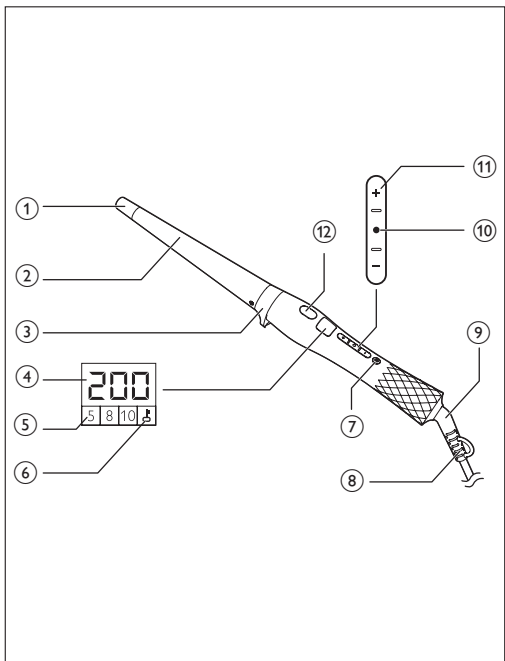
---

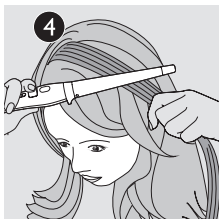
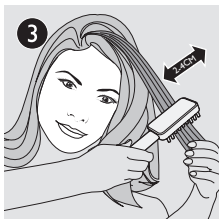
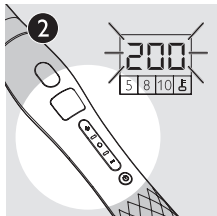
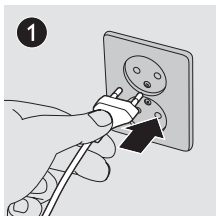
EN      User manual

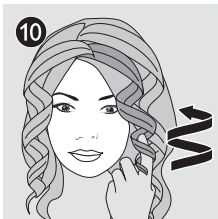
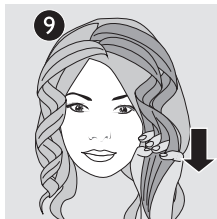
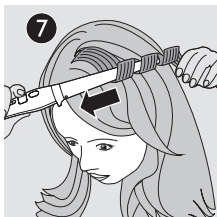
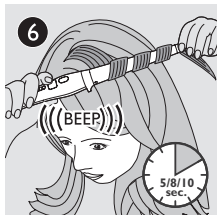
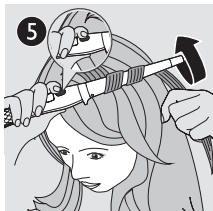
---

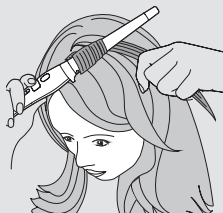
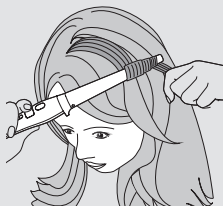
**PHILIPS**

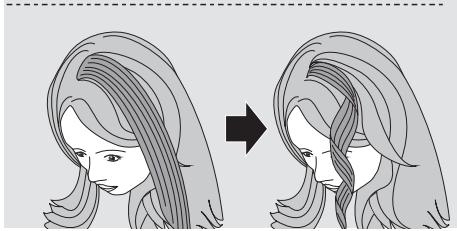
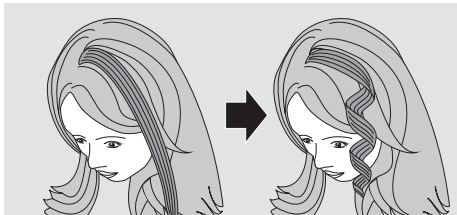


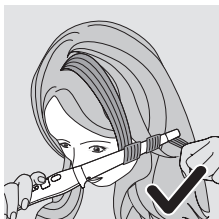




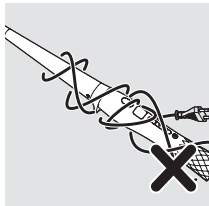
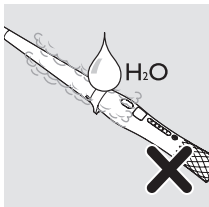
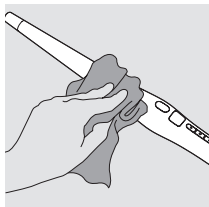
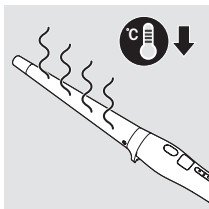
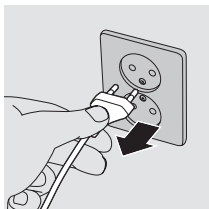












## 1 Congratulations

Congratulations on your purchase, and welcome to Philips! To fully benefit from the support that Philips offers, register your product at [www.philips.com/welcome](http://www.philips.com/welcome).

## 2 Introduction

Hyper sumptuous, soft curls, radiating shine. Voluptuous, chic waves with lots of volume and thickness. The new Philips curler Care CurlControl with Curl Ready Indicator enables you to create variations on the theme of curls with no compromise on hair health. Conical shape of barrel with diameter from 13 to 25 mm allows to create different types of curls and waves. Silky Smooth ceramic coating of the barrel is twice as smooth on your hair. We hope you will enjoy using your **Care CurlControl**.

We would like to invite you to share your experience with us and other shoppers. Please give us your honest opinion writing a review on product page [www.philips.com/haircare](http://www.philips.com/haircare). It only takes a minute. We look forward to hearing from you

## 3 Important

Read this user manual carefully before you use the appliance and save it for future reference.

- This appliance can be used by children aged from 8 years and above and persons with reduced physical, sensory or mental capabilities or lack of experience and knowledge if they have been given supervision or instruction concerning use of the appliance in a safe way and understand the hazards involved. Children shall not play with the appliance. Cleaning and user maintenance shall not be made by children without supervision.

- Children should be supervised to ensure that they do not play with the appliance.
- If the mains cord is damaged, you must have it replaced by Philips, a service centre authorized by Philips or similarly qualified persons in order to avoid a hazard.
- **WARNING:** Keep this appliance away from water. Do not use it near or over water contained in baths, washbasins, sinks etc. When you use the appliance in a bathroom, unplug it after use. The proximity of water presents a risk, even when the appliance is switched off.
- Check if the voltage indicated on the appliance corresponds to the local mains voltage before you connect the appliance.
- Check the condition of the mains cord regularly. Do not use the appliance if the plug, the cord or the appliance itself is damaged.
- For additional protection, we advise you to install a residual current device (RCD) in the electrical circuit that supplies the bathroom. This RCD must have a rated residual operating current not higher than 30mA. Ask your installer for advice.
- The barrel of this appliance becomes hot during use. Prevent contact with the skin.
- Prevent the mains cord from coming into contact with the hot parts of the appliance.
- Only use the appliance on dry hair.
- Always unplug the appliance after use.
- Wait until the appliance has cooled down before you store it.
- Keep the barrel clean and free of dust.
- Read the instruction and consult your styling product distributor before using in combination with the curler.
- Always return the appliance to a service centre authorized by Philips for examination or repair. Repair by unqualified people could cause an extremely hazardous situation for the user.
- The barrel has a ceramic coating. This coating slowly wears away over time. This does not affect the performance of the appliance.



- Keep the appliance away from flammable objects and materials when it is switched on.
- Never cover the appliance with anything (e.g. a towel or clothing) when it is hot.
- Never leave the appliance unattended when it is plugged in.
- If the appliance is used on colour-treated hair, the barrel may stain.
- This appliance is extremely hot, pay full attention when using this appliance.
- Only hold the handle while the unit plugged in, other parts are hot.
- Before use it in artificial hair, always consult their distributor.
- Do not operate the appliance with wet hands.
- Always place the appliance with the stand on a heat-resistance, stable flat surface. The hot barrel should never touch the surface or other flammable material.

---

## Electromagnetic fields (EMF)

This appliance complies with all standards regarding electromagnetic fields (EMF). If handled properly and according to the instructions in this user manual, the appliance is safe to use based on scientific evidence available today.

---

## Environment

Do not throw away the appliance with the normal household waste at the end of its life, but hand it in an official collection point for recycling. By doing this, you help to preserve the environment.



## 4 Overview

- ① Cool Tip
- ② Silky Smooth Ceramic Barrel
- ③ Resting Stand
- ④ Temperature Setting

- ⑤ Time Settings for Curl Ready Indicator: 5, 8, 10 seconds
- ⑥ Key Lock
- ⑦ On/Off Button
- ⑧ Hanging Loop
- ⑨ 360° Swivel Cord
- ⑩ Time Switch for Curl Ready Indicator
- ⑪ Temperature Switches
- ⑫ Curl Ready Indicator

With the following specialties of your **Care CurlControl**, you will find a healthier and more convenient curling experience.

- **Curl Ready Indicator**

A unique Curl Ready Indicator with choices of 5, 8, 10 seconds lets you know when your curl is ready by giving a “beep” alert - no more hair overtreatment.

- **Digital Adjustable Temperature Settings**

Digital heat settings allow you to choose the temperature that suits your hair type, while the top temperature of 200°C guarantees a perfect result even for thick hair.

- **Key Lock Function**

The Key Lock protects you from a careless operation. After switching on the device, the Key Lock will be automatically activated 15 seconds after you last operated the Temperature Switches, the Time Switch for Curl Ready Indicator or the On/Off Button (the automatic activation thereafter will be after 5 seconds).

- **Automatic Shut-off**

An automatic shut-off after 60 minutes offers you extra safety. You can reactivate the curler by pressing the On/Off Button for 2 seconds.

## 5 Curl your hair

### Getting Ready For Use



#### Warning

- Curling irons are powerful styling tools and must always be used with care.

- 1 Connect the plug to a power supply socket.
- 2 Press On/Off Button to switch the appliance on. Select a temperature and time setting according to the table below:

1. Select your hair type	2. See recommended temperature ranges	3. See recommended curling time
Fine	130-150 °C	5 or 8 seconds
Normal	160-180 °C	8 or 10 seconds
Thick	190-200 °C	8 or 10 seconds



## Styling Tips

- Use lower temperature of the recommended range if your hair is dyed or permed. If you apply a flexible hair spray which is strongly recommended, you can reduce the suggested temperature by another 10°C.
- Choose shorter recommended curling time for loose, natural looking curls and waves and longer recommended time for tight, well-defined curls.

↳ The heating up time is indicated by blinking temperature numbers.

↳ If the temperature indication stays stable, the curler is ready for use.

If the buttons of the appliance are not operated for 5 seconds, the Key Lock is activated automatically (the first automatic activation after switching on the appliance is after 15 seconds). To unlock the appliance, press the Time Switch for Curl Ready Indicator for 3 seconds.

## Usage



## Note

- If this is your first-time-use with a clip-less curler try out these steps without switching the device on first to get some practice.
- If you want to change the temperature or time setting during application, you might have to deactivate the Key Lock by pressing the Time Switch for Curl Ready Indicator.
- Never touch the hot barrel with your fingers.
- Only use the appliance on dry hair.

- 3 Brush to de-tangle your hair. Depending on your desired result, take a hair strand between 2cm and 4cm (for loose waves take a thicker strand, for tight curls take a thinner strand).
- 4 Hold the curler horizontally and point it away from your head and face. Start at the widest point of the barrel, place the curler near the roots of the section and wrap the hair around from root to tip.
- 5 Hold your hair tips at the Cool Tip with your fingers and press the Curl Ready Indicator. When you hear the “beep”, the time counting starts.
- 6 When your curl is ready, you will hear a “beep” alert.
- 7 Release the hair tip and glide the curler out of your hair – DO NOT unwrap the strands.
- 8 Repeat step 3-7 until all the hair is curled.
- 9 , 10 To finish, break up the curls with your fingers and wind each smaller curl around your finger for extra definition.

## After Use

- 1 Switch off the appliance and unplug it.
- 2 Place it on a heat-resistant surface until it cools down.
- 3 Remove hairs and dust from the barrel.
- 4 Clean the barrel with a damp cloth.
- 5 Keep it in a safe and dry place, free of dust. You can also hang it with the hanging loop (8).



## Note

- Avoid scratches on the barrel.
- Do not wind the mains cord around the appliance.
- Never rinse the device with water.



## Styling Tips

- 1 The thin end of the barrel creates small curls, the big end bigger curls or waves. You can use the whole length of the barrel, or you can choose to use just one area for a larger or smaller curl.
- 2 The thinner the strand, the tighter the curl.
- 3 For a really modern wave in long hair, start the curl at the level of your cheekbone, and also leave the last few centimeters uncurled. Comb it through with your fingers or a brush.
- 4 This curler can also be used for creating root volume. Hold a section of hair at 90degrees to the scalp, then place the barrel 1 cm above the roots (avoid touching the scalp) and lay the strand onto the widest part of the barrel.
- 5 For extra hold apply hair spray to each section before curling.
- 6 Keep your hair dry while curling.
- 7 When you've finished curling your hair, allow all the curls to fully cool down before continuing with styling.
- 8 Before you start, make sure your hands are clean as the oils from your hands will be transferred to your hair.
- 9 If your hair is chemically treated (colored or permed) use a styling product which offers heat protection before styling.
- 10 When you wrap the hair around the barrel, allow it to twist (it shouldn't stay flat like when using a traditional curler). This gives the curls that modern fullness and bounce.
- 11 If your hair has a natural wave, you can use the curler on just a few or the top sections to enhance the curl here and there.
- 12 For defined curls, don't brush your hair after curling. For a wavy, volumous look after curling gently brush the curls out with a natural bristle brush. Start by brushing through the ends and work your way up.



For additional styling tips from our Haircare expert Andy Uffels visit our Homepage [www.philips.com](http://www.philips.com) or our Facebook page "Philips Beauty". Hope you will enjoy using your Care CurlControl.

## 6 Guarantee and service

If you need information or if you have a problem, please visit the Philips website at [www.philips.com](http://www.philips.com) or contact the Philips Customer Care Centre in your country (you find its phone number in the worldwide guarantee leaflet). If there is no Consumer Care Centre in your country, go to your local Philips dealer or contact the Service Department of Philips Domestic Appliances and Personal Care BV.

## 7 Troubleshooting

If problems should arise with your curler and you cannot solve them with the information below, please contact the nearest Philips service centre or the Philips Customer Care Centre in your country.

<b>Problem</b>	<b>Cause</b>	<b>Solution</b>
The appliance does not work at all.	The power socket to which the appliance has been connected may not live.	Ensure the socket is live.
	The mains cord of the appliance may be damaged.	If the mains cord is damaged, you must have it replaced by Philips, a service centre authorised by Philips or similarly qualified persons in order to avoid a hazard.



All registered and unregistered trademarks are property of their respective owners.

© 2012 Koninklijke Philips Electronics N.V.

All rights reserved.

3140 035 29451

